



NucleoCounter® NC-200™ -
High Precision Cell Counter



- One-Step Viability and Cell Count
- Load & Run Cassettes
- Flexible gating protocols

Image based vs Flow based cytometry

Why Image Cytometry ?



System Robustness

- * Being LED based systems – our instruments remove the hassle of laser maintenance and drift compensation
- * Having no Flow sheath means - No cleaning routines / No service contracts

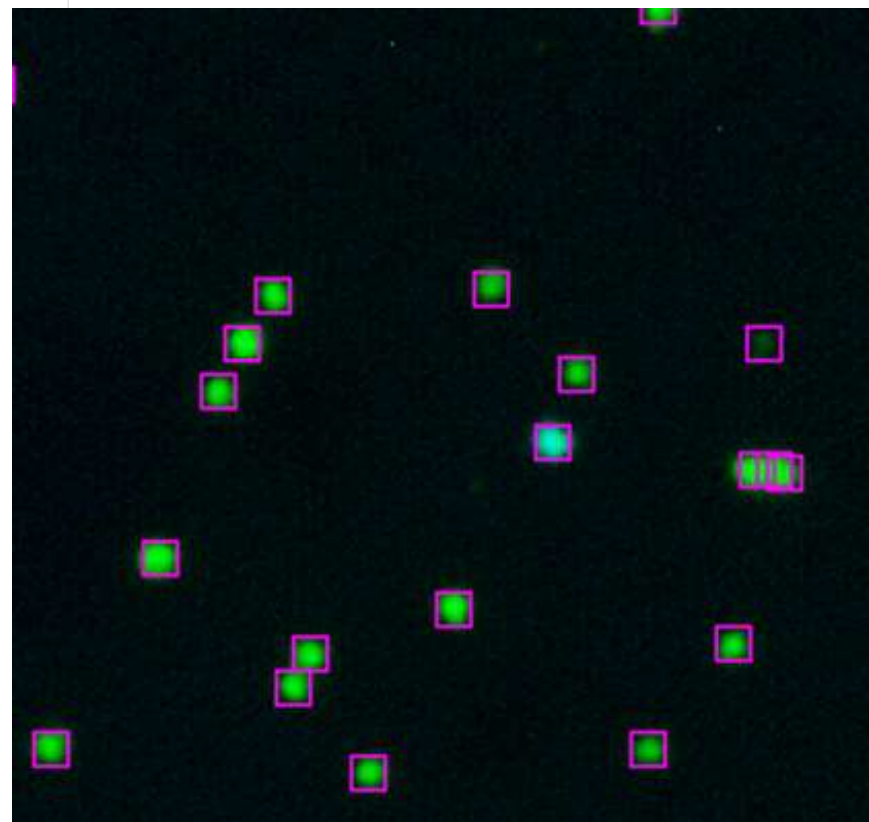
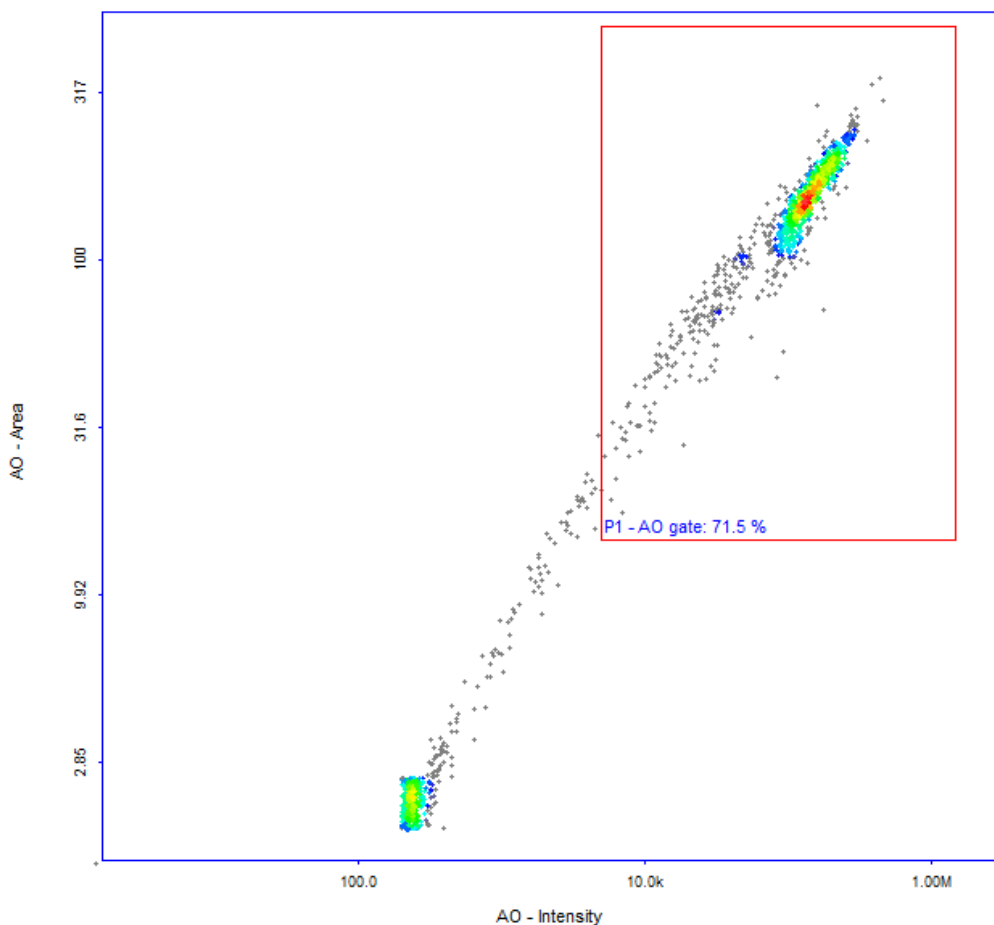
Analysis Benefit for the End User

- Toggling between Image and Plot can directly inform the user when making gating decisions
 - as well as provide evidence for those decisions! (nice for supplementary data)

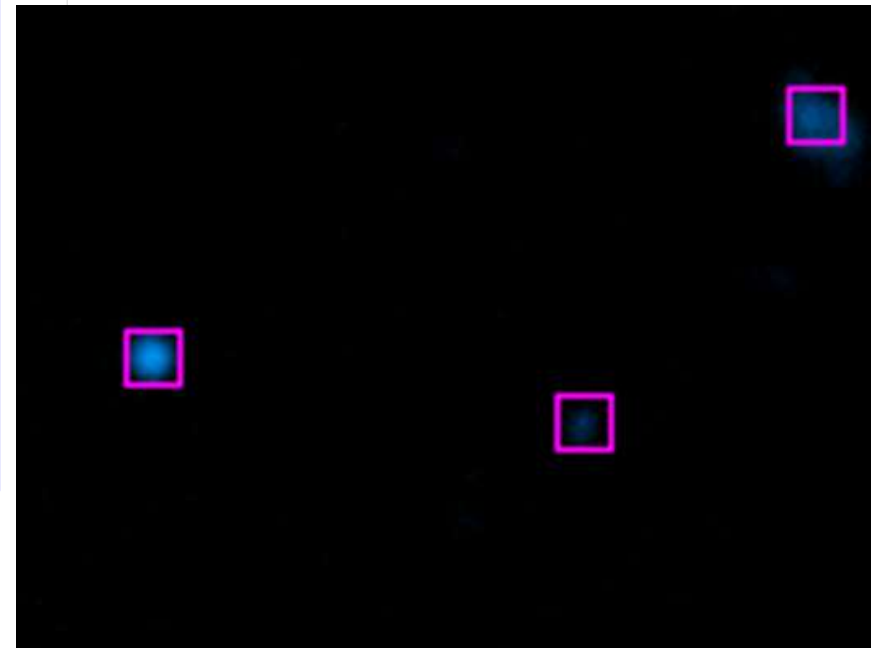
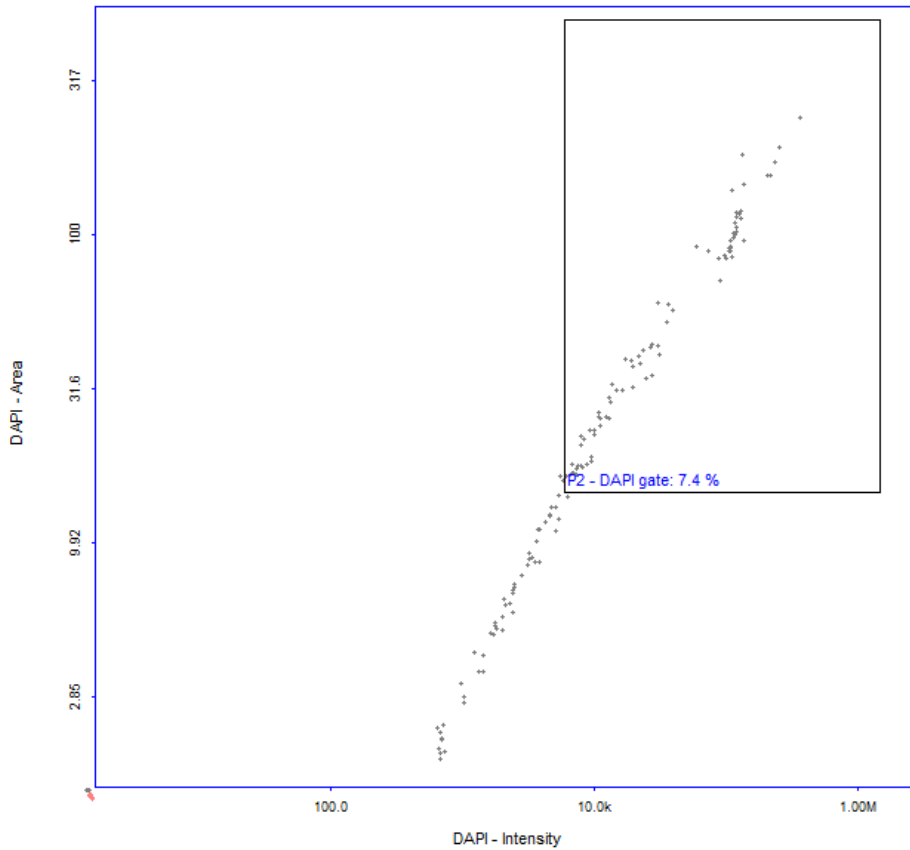
Couple of examples :

1

Viability and Cell Count "Method 1" Total Count - everything, even the faint cell to the right has been counted! - Verified

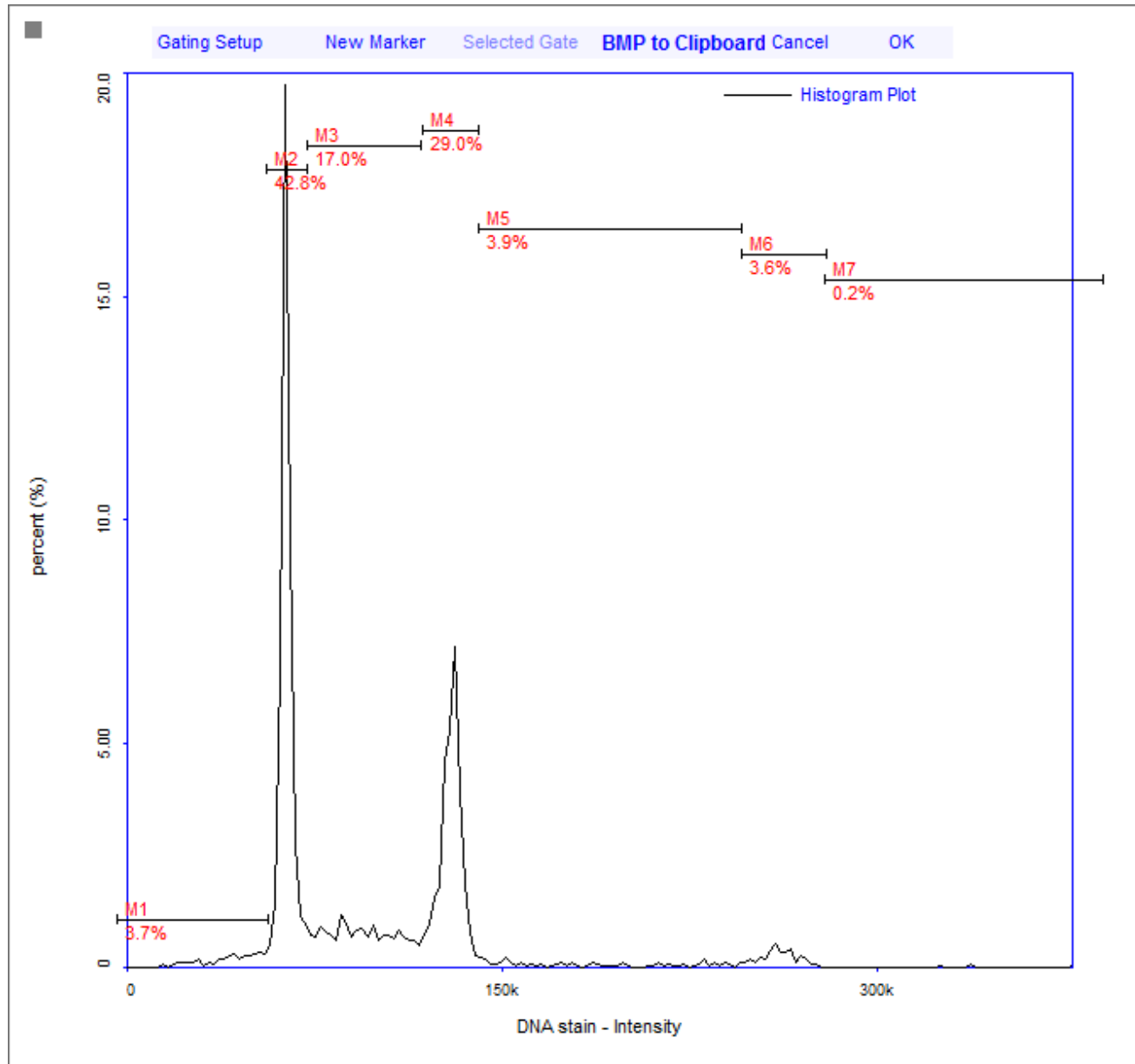


Viability and Cell Count "Method 1" Dead Count – the faintest acceptable to be deemed dead in the bottom right corner

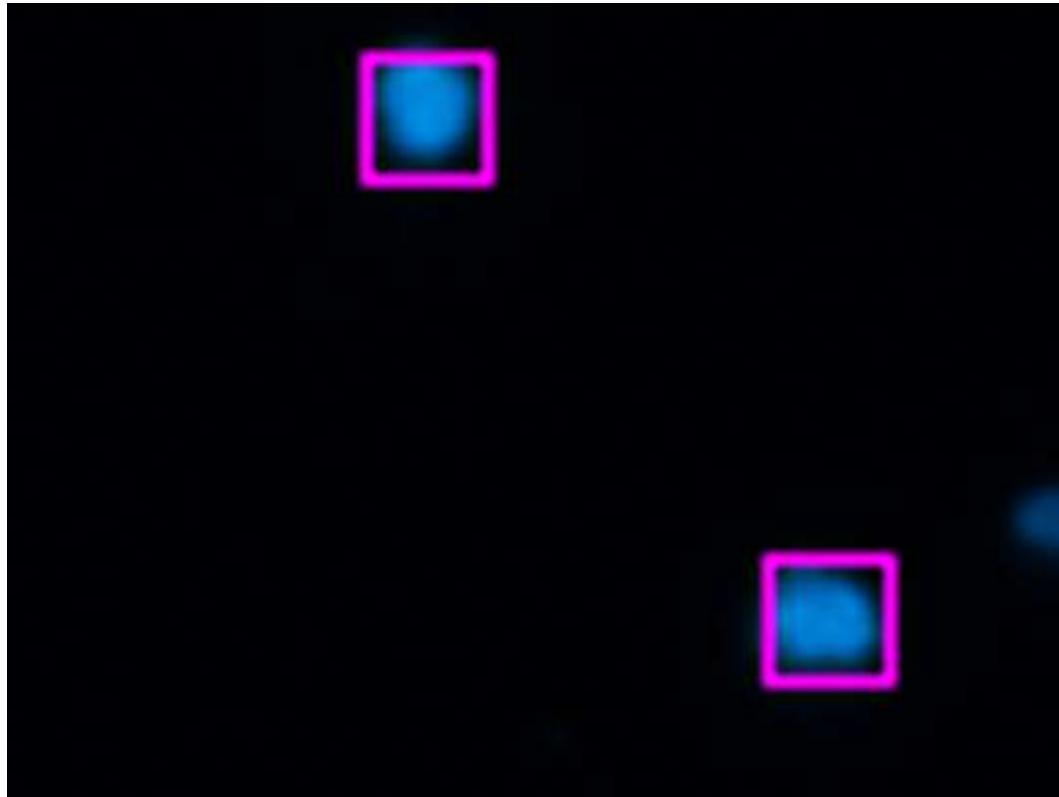


2

Cell Cycle assay (NC-250/NC-3000) - Markers/Gating:

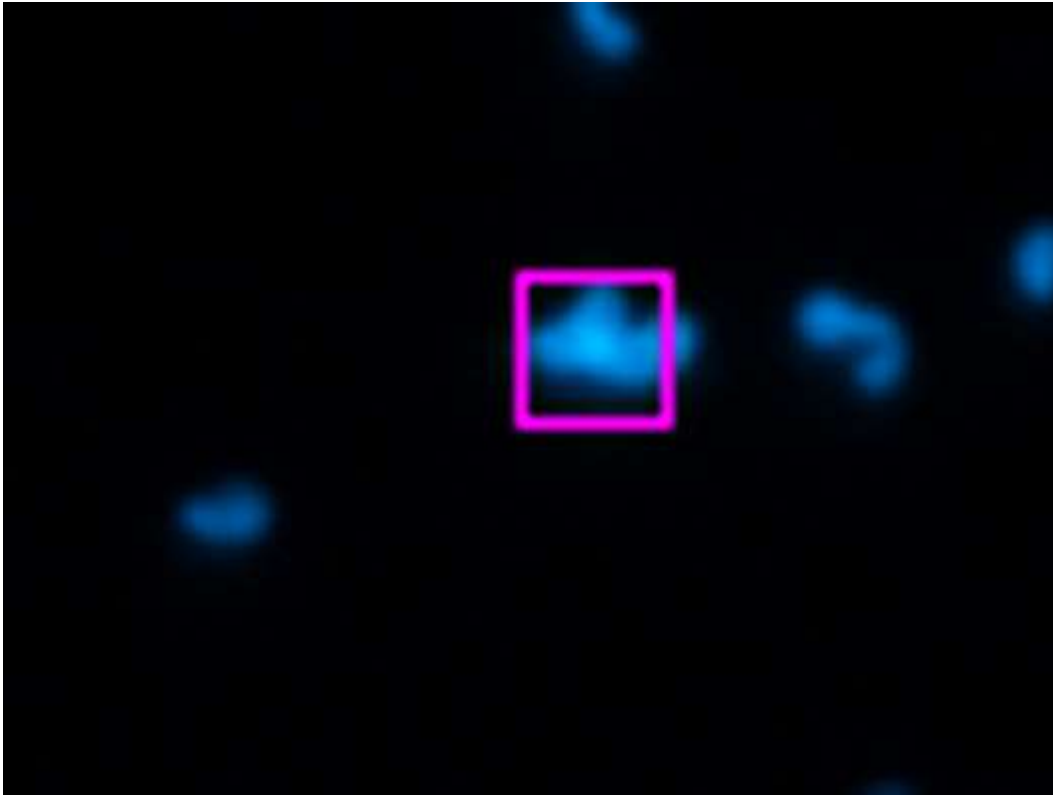


Dont gate out tetra



- Included in analysis (M6)

Larger than tetra/nuclei cluster



- Gated out (M7)

Thank you for you time !

- * Interested in automated cell counting
or
- * Image-based fluorescence cytometry ?

Visit us in the Innovation Zone : IZ.5

