



# Qube – ion channel screening in HTS

Mads P.G. Korsgaard  
Sophion Bioscience, part of Biolin

ELRIG, Telford, UK  
2<sup>nd</sup> Sep. 2015

# Sophion Bioscience

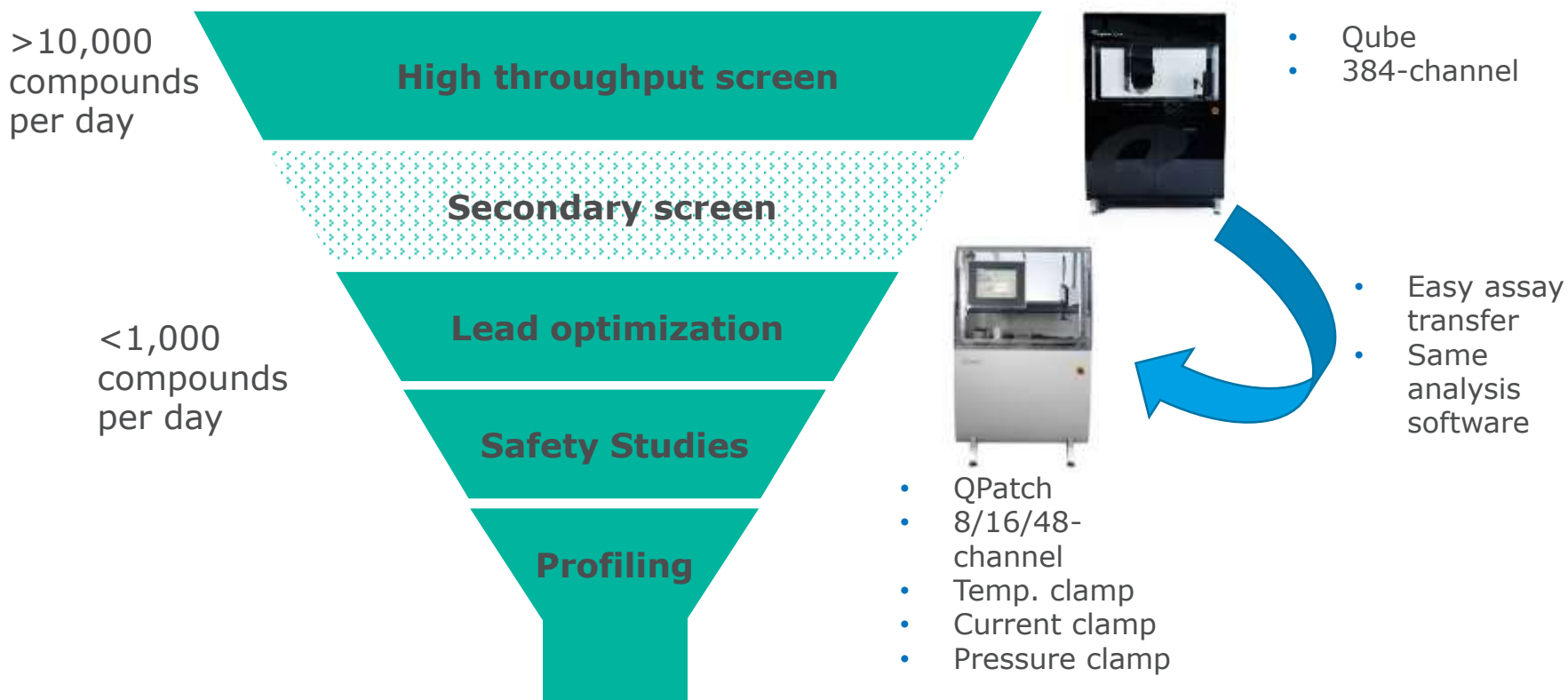
Sophion provides **automated patch clamp technology** for high-quality drug screening on **ion channels**

Danish instrumentation company founded in 2000

Focus industries: Pharma, CRO, Universities, agriculture, defense and food industry

Part of Biolin Scientific, Sweden, since 2011

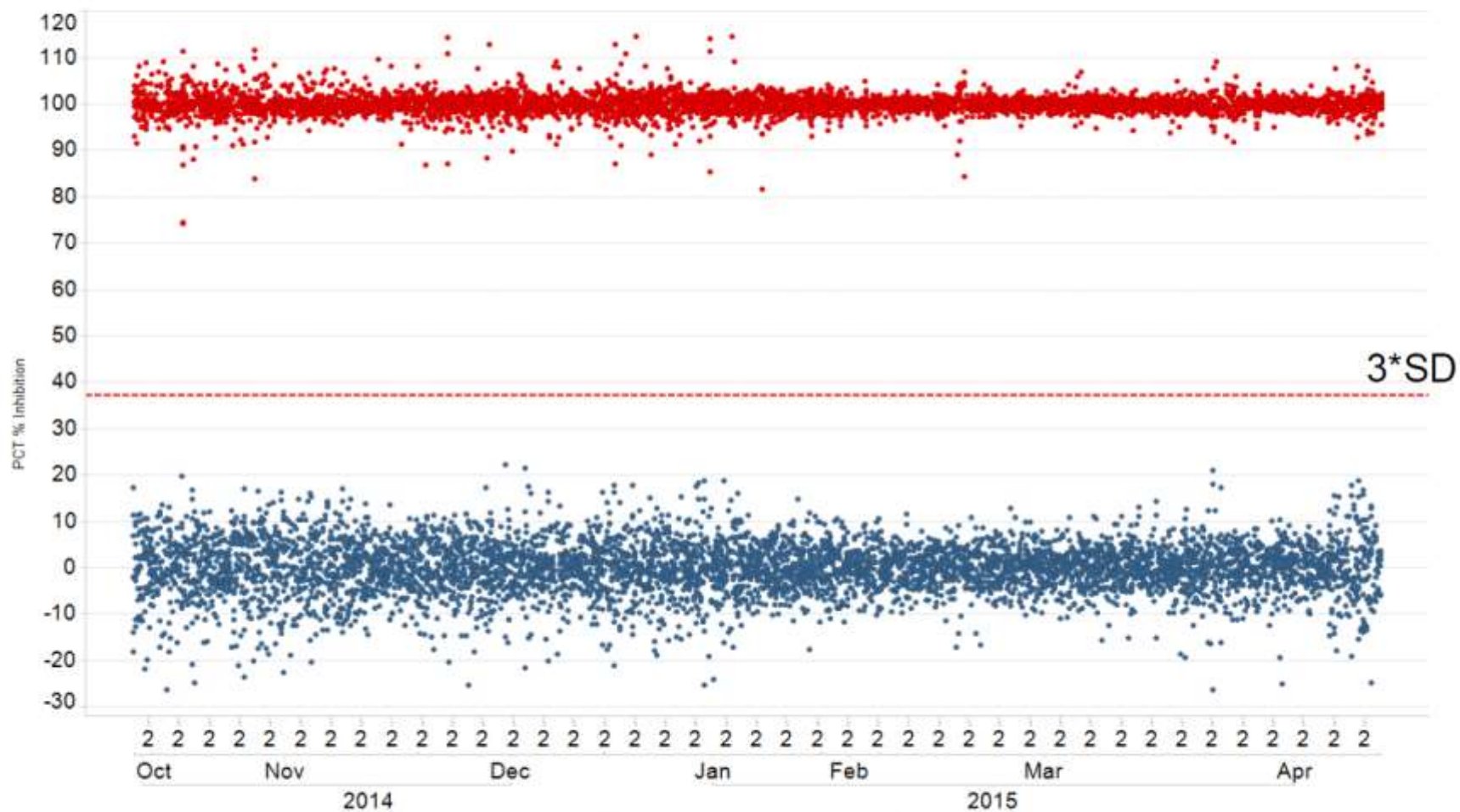
# Unifying platforms



# First Giga seal based HTS screen

- Target: Na<sub>v</sub>1.7
- >160.000 compounds
- 1% hit rate
- >60% confirmation rate
- Z' factor average 0.78
  - improved through the course of the screen

# HTS Plate Controls

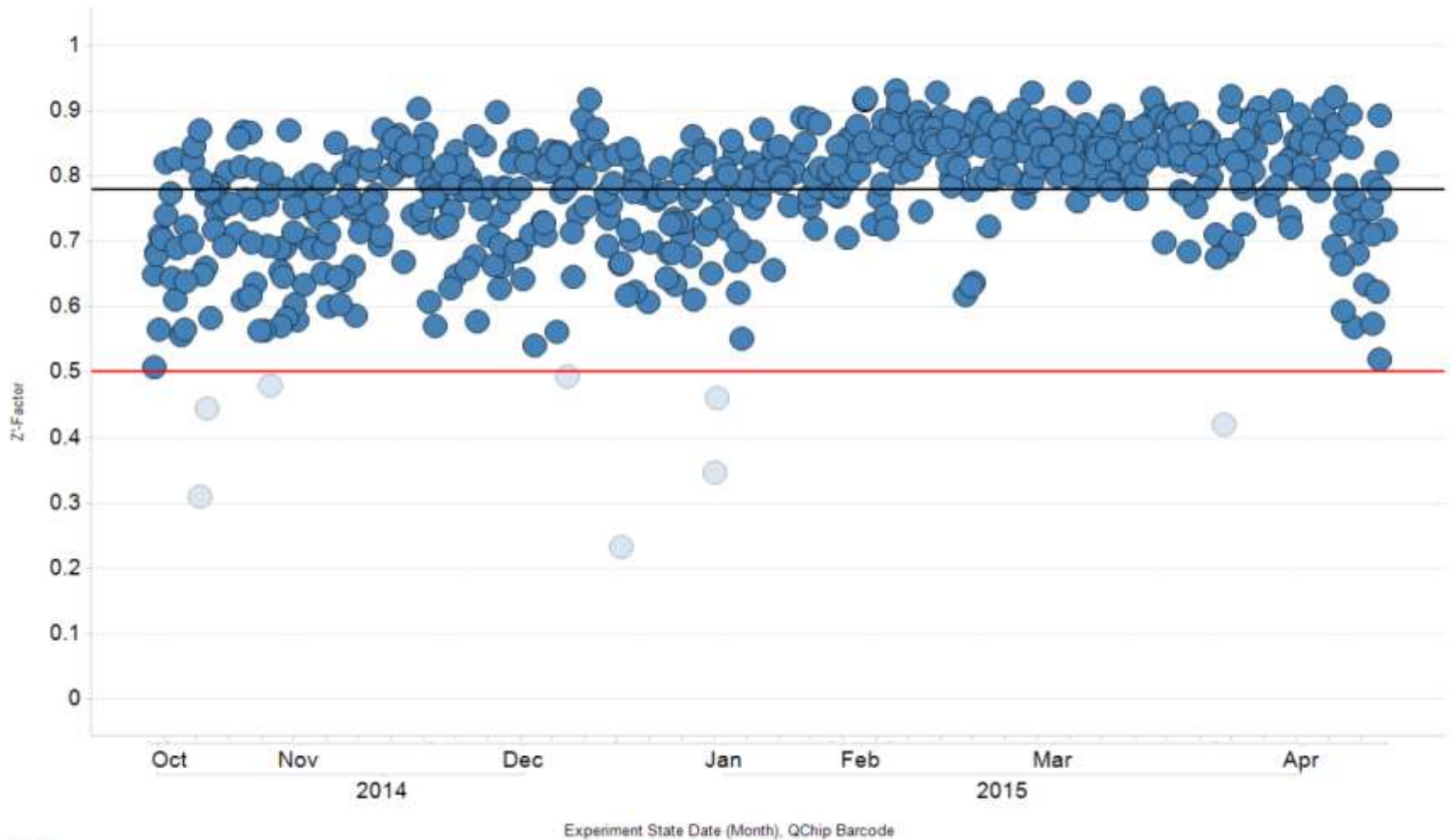


Neuroscience & Pain

A Pfizer Research Unit



# HTS Plate Z'-Factors



**Neuroscience & Pain**

A **Pfizer** Research Unit

# Acknowledgements

- Juha Kammonen, Pfizer Neuroscience Pain Research Unit, Cambridge, UK
- Ian Farrow, Pfizer Neuroscience Pain Research Unit, Cambridge, UK
- Chris Chambers, Pfizer Neuroscience Pain Research Unit, Cambridge, UK