



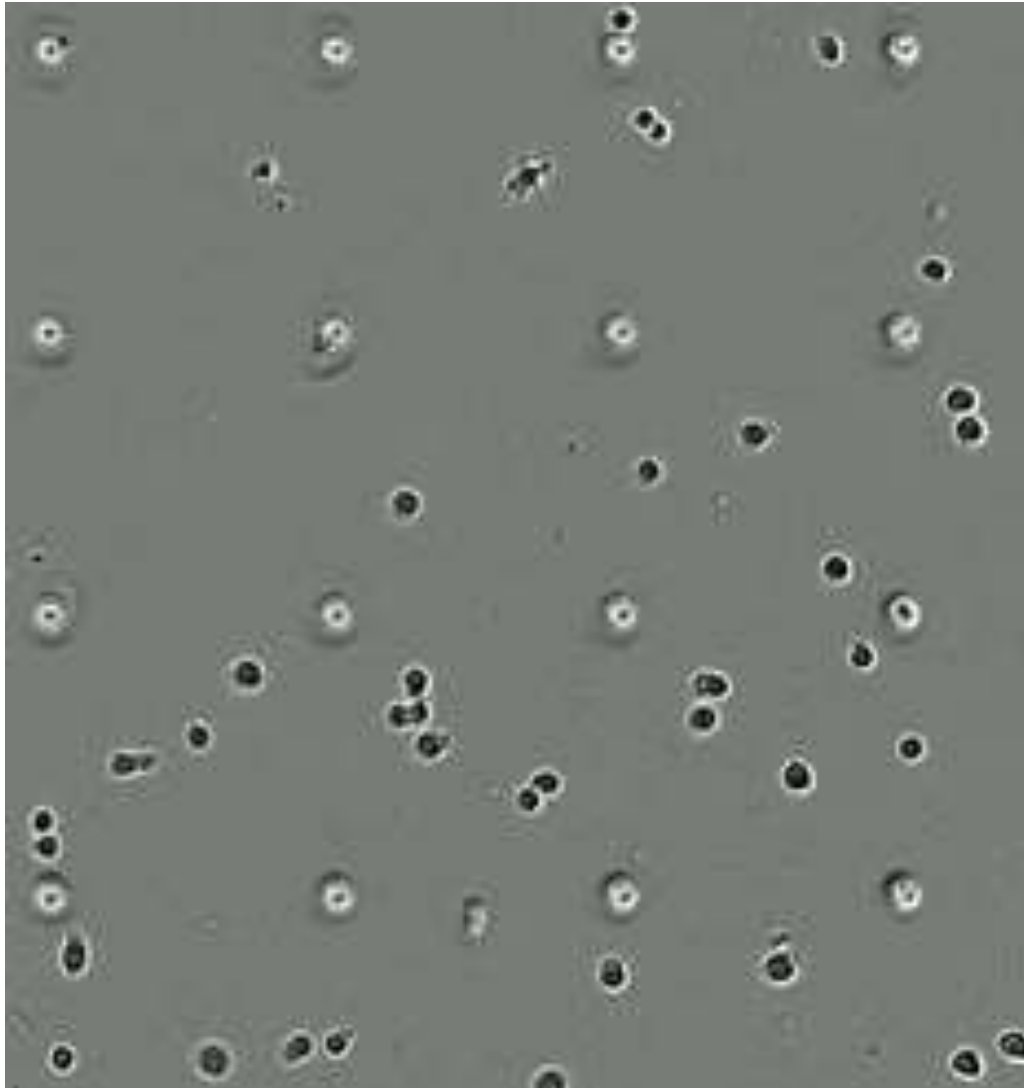
ESSEN
BIO SCIENCE

IncuCyte™ Chemotaxis System: a new and enabling solution for chemotaxis assays

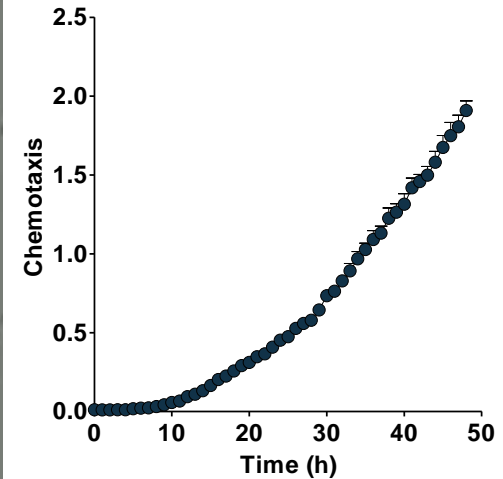
Tim O'Callaghan
Product Manager

IncuCyte™ Chemotaxis System:

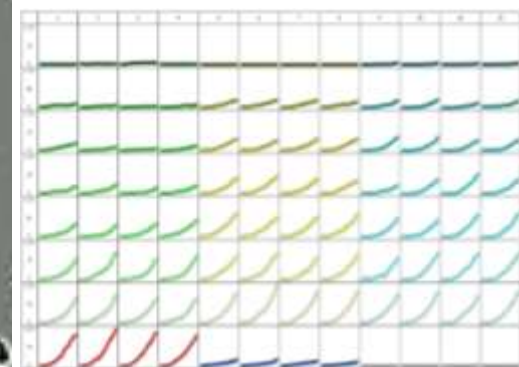
Visualize cell migration in real time with fully automated analysis



Real time quantitative data

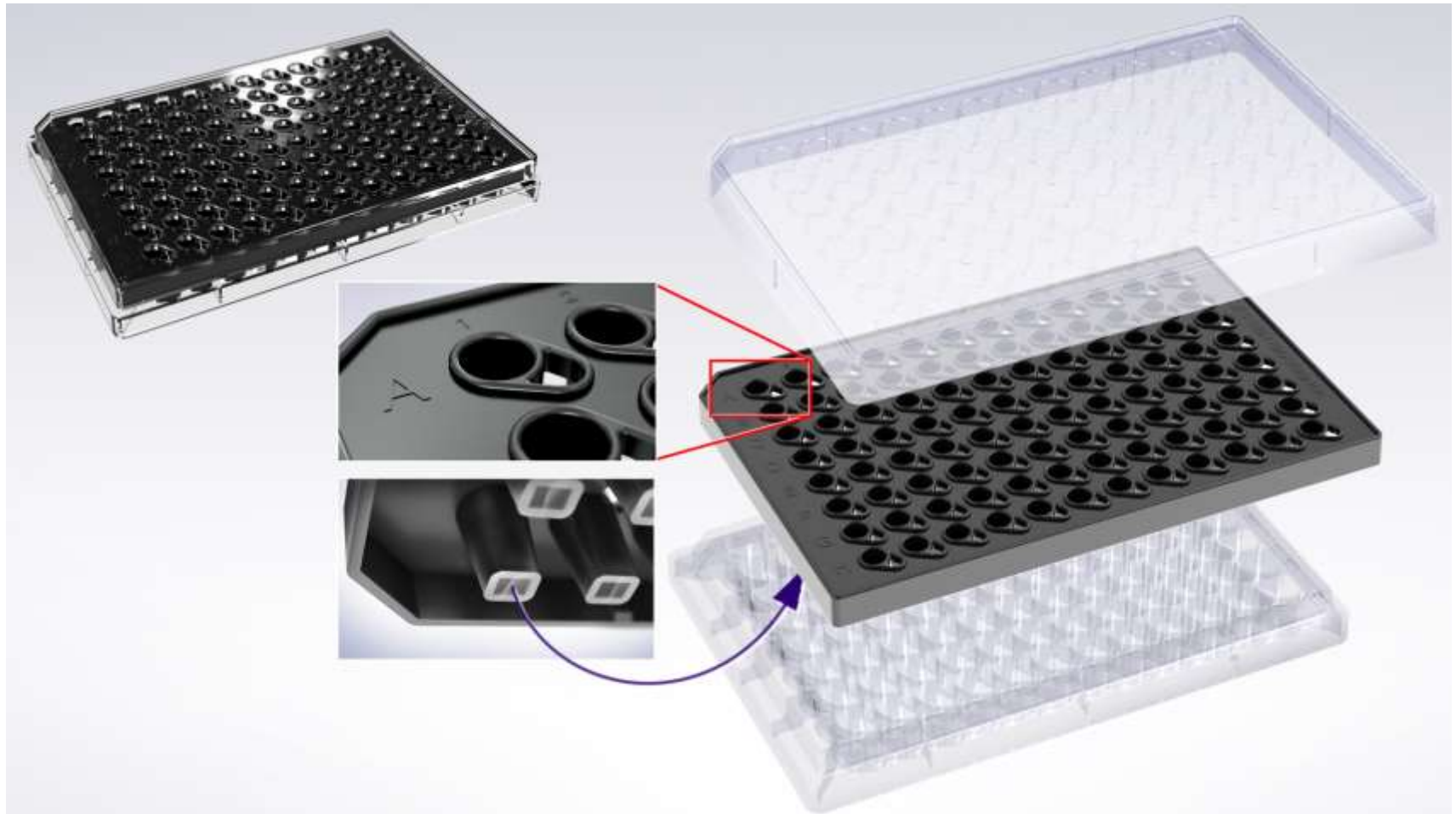


96-well throughput



IncuCyte™ ClearView 96-Well Cell Migration Plate

Combine the optical clarity of microfluidics devices with the throughput of transmembrane assays.



IncuCyte™ Chemotaxis System

Learn more at booth B1

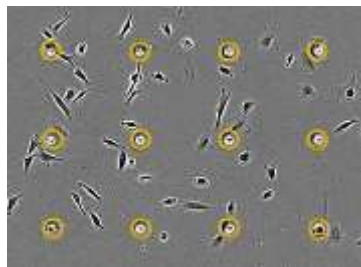
Visit us at Posters

- 120
- 121

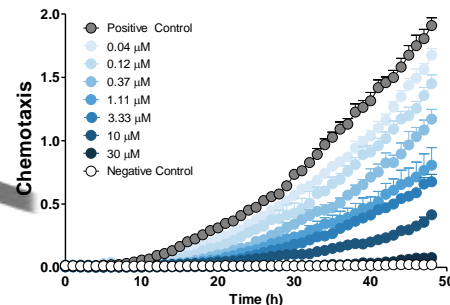
- Visualize cell migration in real time with fully automated analysis
- Highly reproducible 96-well kinetic assays suitable for screening
- Low cell usage ideal for rare, expensive and primary cells
- Relevant surface-mediated migration

essenbioscience.com/chemotaxis

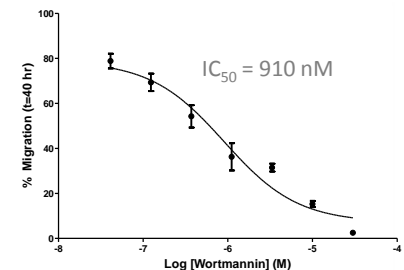
Images & movies



Kinetic data



Informed pharmacology

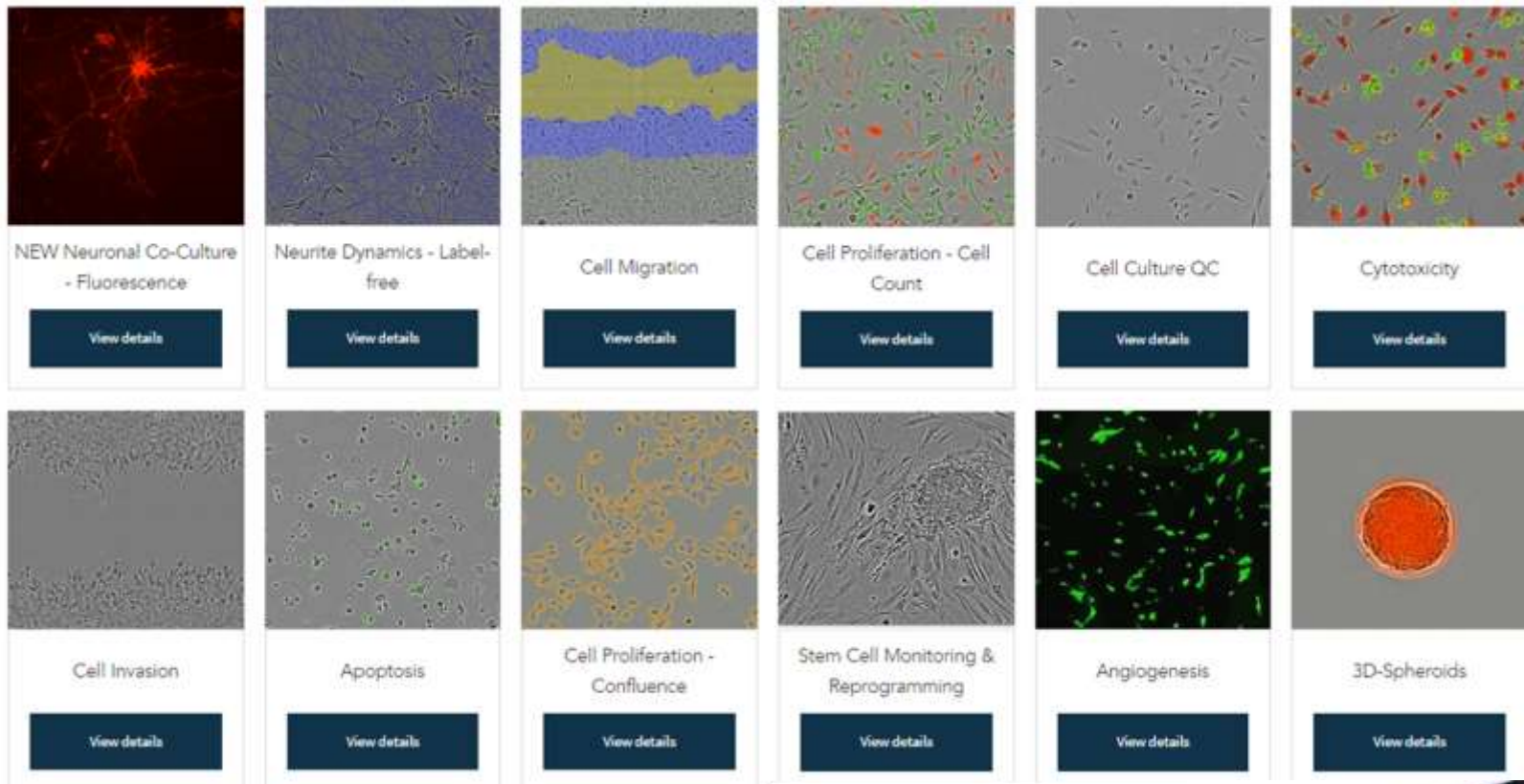


IncuCyte™ live cell imaging and analysis

Learn more at booth B1

Visit us at Posters

- 120
- 121



- Over 500 peer reviewed publications
- Global install base, 1000's of users

essenbioscience.com/IncuCyte

